

KF-SW2-12C

Features and Benefits

- Substantial attenuation on common and differential mode noises in conducted emission standards frequency range
- Proper layout of segments leads to manufacture an efficient, compact, lightweight and cost-effective filter
- Comply With UL 1283 (Standard For Safety)
- Comply With Environmental Conditions Standard
- Kaman filters have full one-year warranty

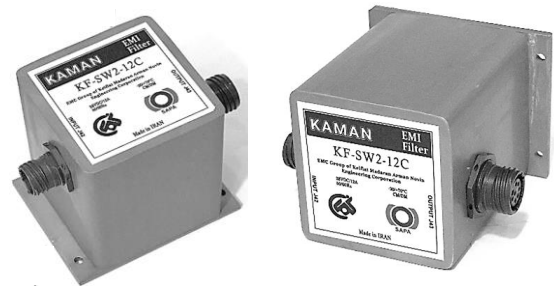
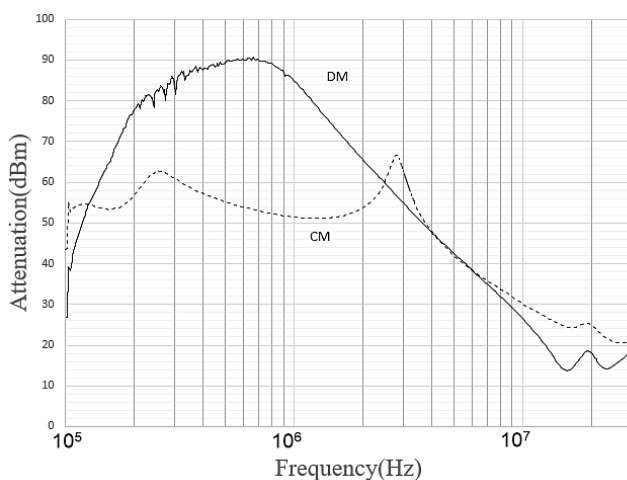
Note: Enhanced performance filters with high leakage current (3~8mA) are available depending on client needs.

Technical specification

Phase	Single(S)
Rated Voltage	28VDC
Rated Current	12A
Operating Frequency	50/60Hz
Attenuated Frequency Range	0.01 to 10MHz
Leakage Current	0.7 mA
Operating Temperature	-30 to +70°C
Insulation Resistance	200MΩ
High Voltage Test	1500 VAC
Continuity	20 mΩ
I/O Connection	Cylindrical
Weight	1550 g

Attenuation Characteristics

KF-SW2-12C Noise Attenuation



Typical Applications

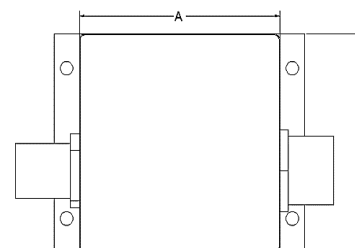
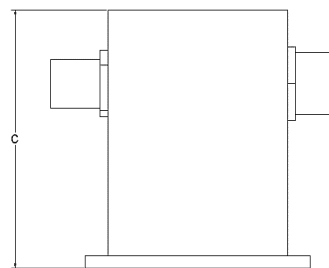
- Electrical and electronic equipment
- Power lines and power supplies
- General control devices
- Industrial devices
- Military Equipments

Product Identification

KF - S W 2 - 12 C

- KF → Kaman Filter
- S → Single(S) or Three(T) phase
- W → Low(L) or high(H) cutoff freq or wideband(W) attenuation range
- 2 → Filter Stages (1,2,3)
- 12 → Rated current (01,03,05,06,08,10,12,16,20,65)
- C → Terminal type: Stud type(S), Phoenix(F), Rail mount(R), Cylindrical(C)

Mechanical Data



C	B	A	شماره قطعه
105	80	80	KF-SW2-12C

All dimension in mm;